

# SILLY SIGNS

**SOLVE A PROBLEM IN YOUR NEIGHBORHOOD WITH HUMOR!**



Signs tell us a lot about where we are and what to do there. You've probably seen stops signs, street signs, and street crossing signs.

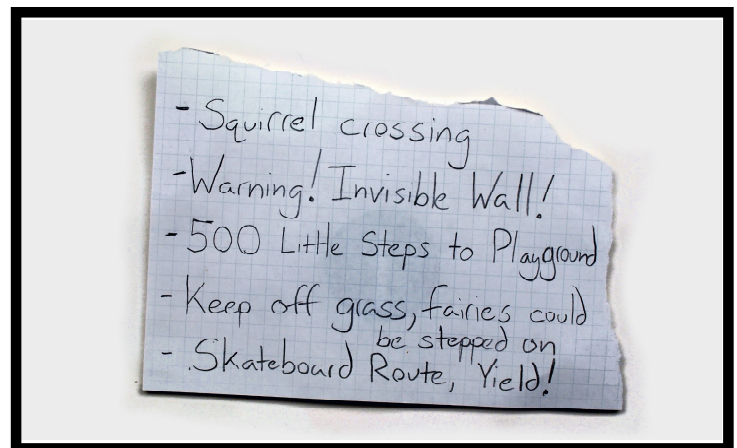
But what about street signs for squirrels, or "no entry, monsters inside" signs? What might happen if people see new signs? How could they make your neighborhood better?

Before making a **SILLY SIGN**, think about a problem you'd like to solve. Perhaps cars go too fast on your street, or people distracting you when you're studying.

After you make the sign, try to notice if it does what you hoped it would do. If you're putting the sign up outside of your house, check in with whoever owns the property first.

## INSTRUCTIONS

1. Draft sign ideas on scrap paper.



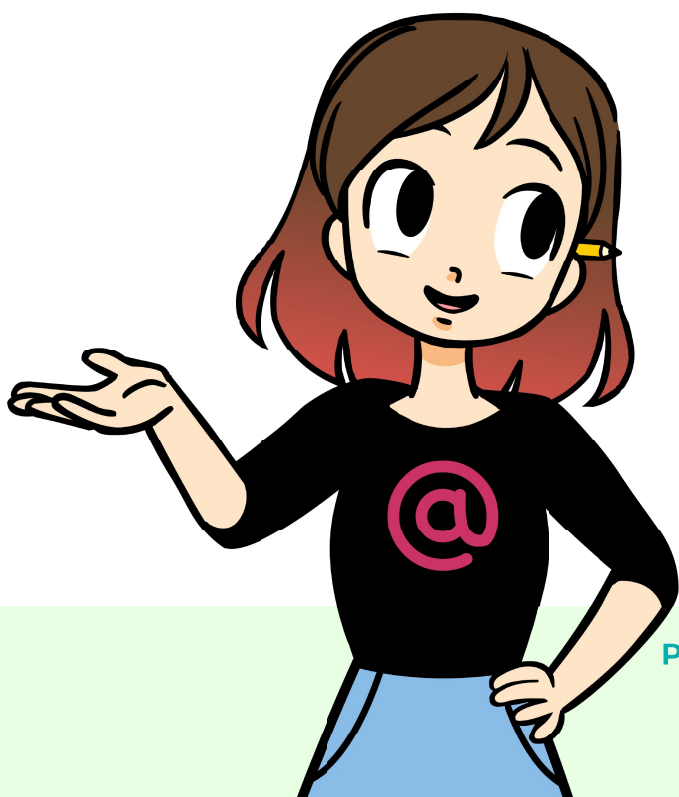
2. Write your favorite one on **CARDSTOCK** in **PENCIL**.



3. Use **MARKERS** and paper to decorate the sign.



4. Put clear **TAPE** on the sign to make it waterproof.



## MAKE IT UNIQUE!

Folding paper and taping it to your sign can really make it pop! Bold colors will make it easier to read from far away.